

# RFID

## SMART RFID MODULE



### **YHY5225 RFID module** RFID/NFC Reader/Writer Module

### **Data sheet**

Version 1.0  
Jan, 2019



## 1. Features

- ▲ Can detect clone UID card
- ▲ Small size and built-in antenna on board
- ▲ Auto scan for presence of tags and upload data
- ▲ NFC NDEF text commands
- ▲ Encrypted EEPROM to store up to 40 groups of keys
- ▲ Contactless operating frequency 13.56 MHz
- ▲ Supports ISO14443A ,Mifare<sup>®</sup> Classic1K,Mifare<sup>®</sup> Ultra Light, NTAG213
- ▲ RS232(TTL) Interface, baud rate up to 230400bps,default 19200bps
- ▲ Typical Operating Distance: 0 ~5cm
- ▲ Operating Voltage : DC 3.3V/5.0V
- ▲ 1 LED indicator, 2 programmable I/O pins
- ▲ Size: 58mm × 35mm × 6mm
- ▲ Weight:10g

## 2. Application information

YHY5225 can be use on vending machine, secure access, parking, payment, ticketing, leisure, member ship, time & attendance, biometrics, IT-access, Identify, loyalty, Counter, data storage and fast data collection systems.

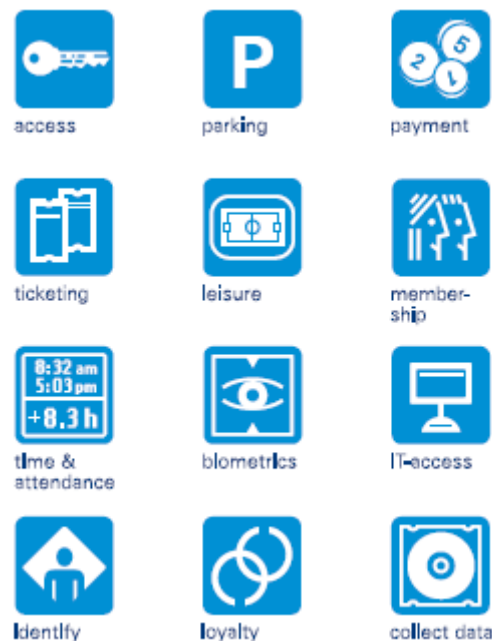


Figure 1. YHY5225 Applications

### 3. Quick reference data

Table 1: Quick reference data

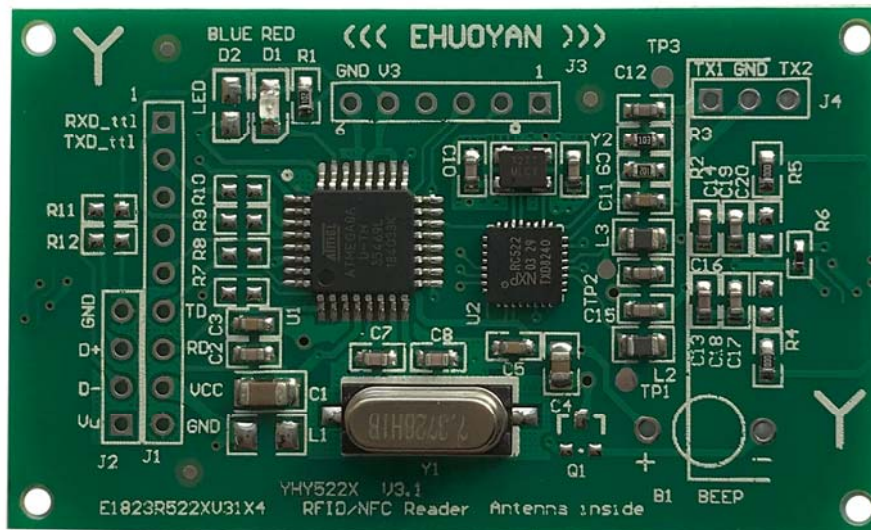
Symbol	Parameter	Conditions	Min	Typ	Max	Unit
V <sub>CC</sub>	Supply voltage	GND=0V	2.7	3.3/5.0	7	V
I <sub>HPD</sub>	Hard Power-down Current		-	-	10	uA
I <sub>ASD</sub>	Antenna Soft-down	V <sub>CC</sub> =3.3V		15	20	mA
I <sub>VCC</sub>	Supply Current	V <sub>CC</sub> =3.3V		43	65	mA
D <sub>RW</sub>	Read/Write card Distance	V <sub>CC</sub> =3.3V	0		60	mm
T <sub>amb</sub>	Operating ambient temperature		-25		+85	°C

### 4. Ordering Information

Table 2: Ordering Information

Type Number	Package	
	Name	Description
YHY5225	YPHDR9-4	

### 5. Package outline



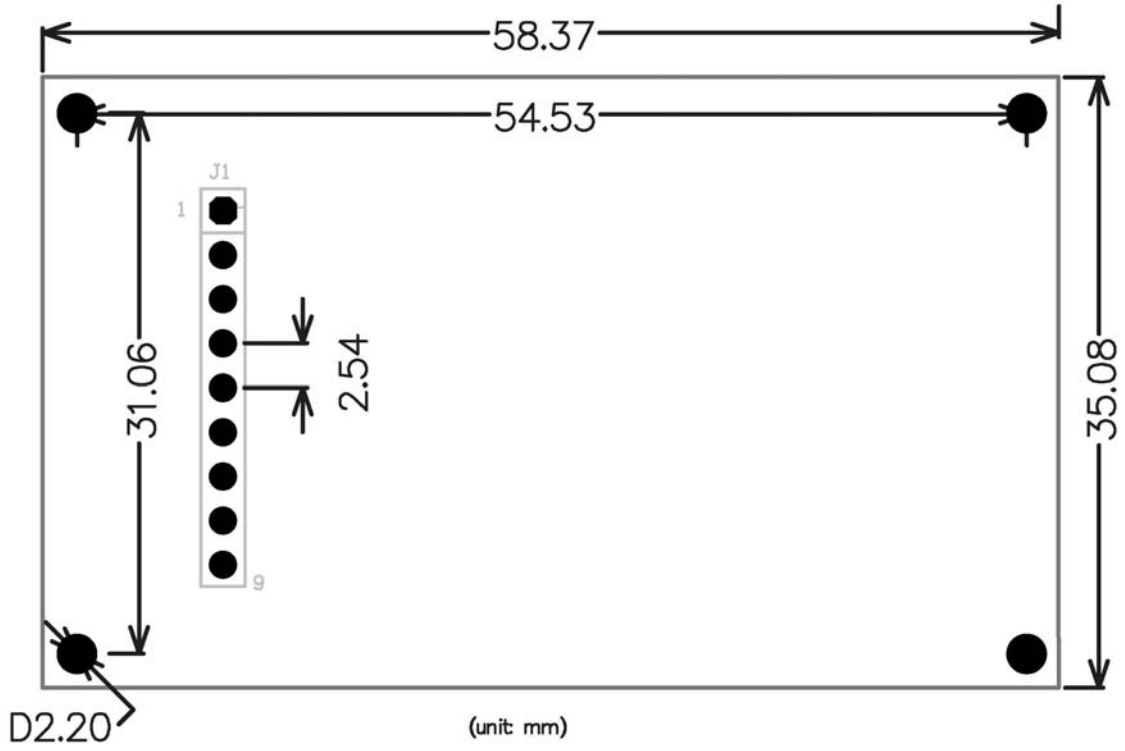


Figure 3– YHY5225 Top view



Figure 4– YHY5225 Side View

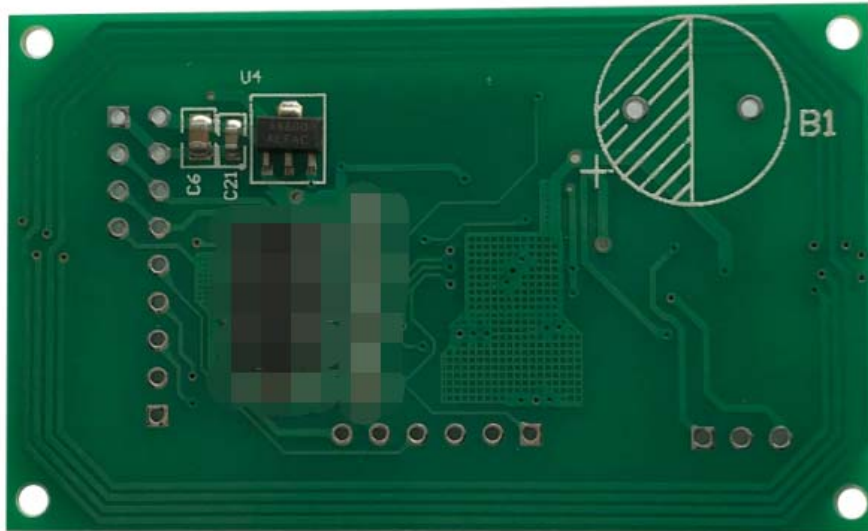


Figure 5– YHY5225 Back View

## **6. Contact information**

---

Ehuoyan Co.,Ltd.

Tel: +86-010-80128328

email: info@ehuoyan.com

Web Site : <http://www.ehuoyan.com/>